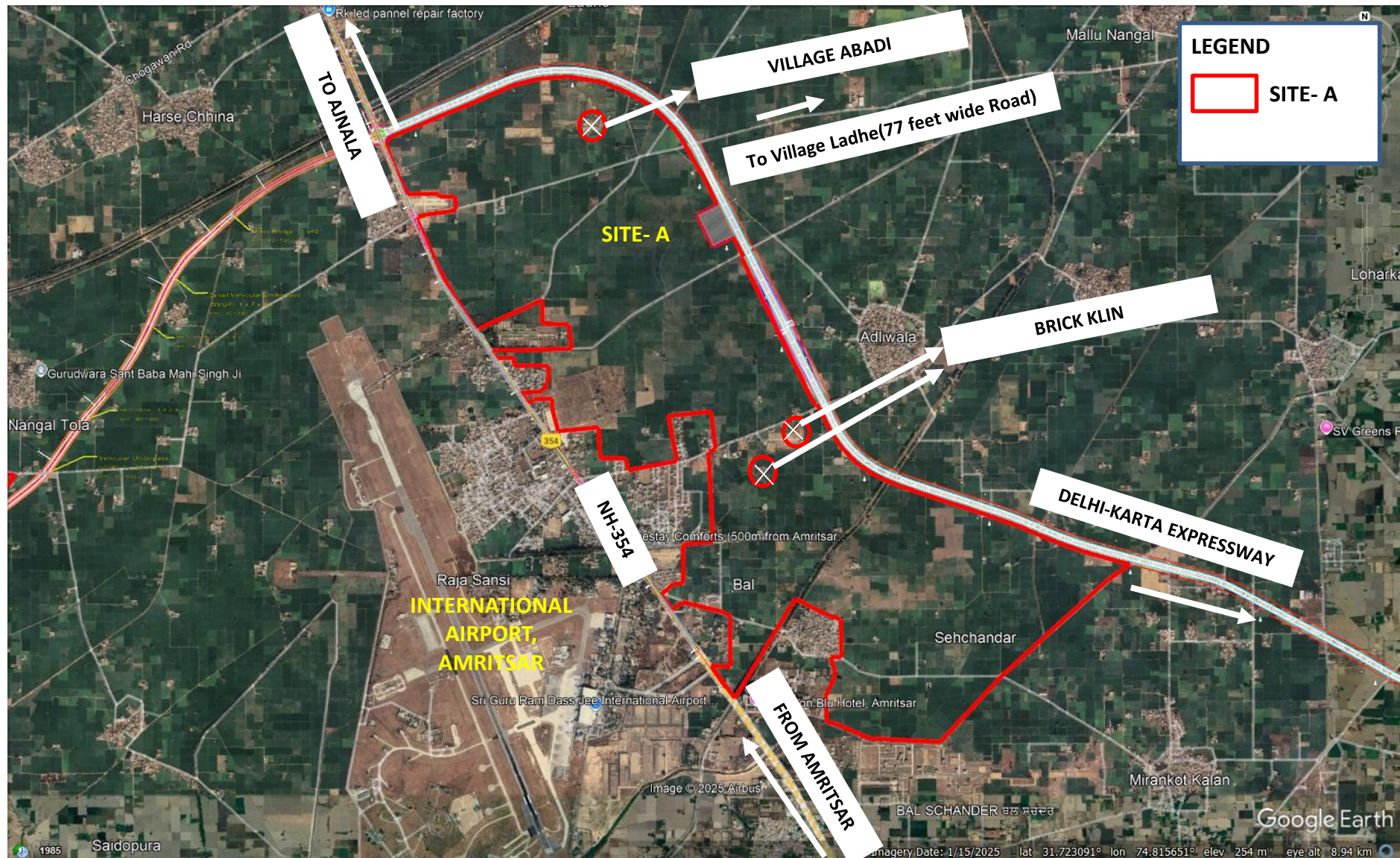


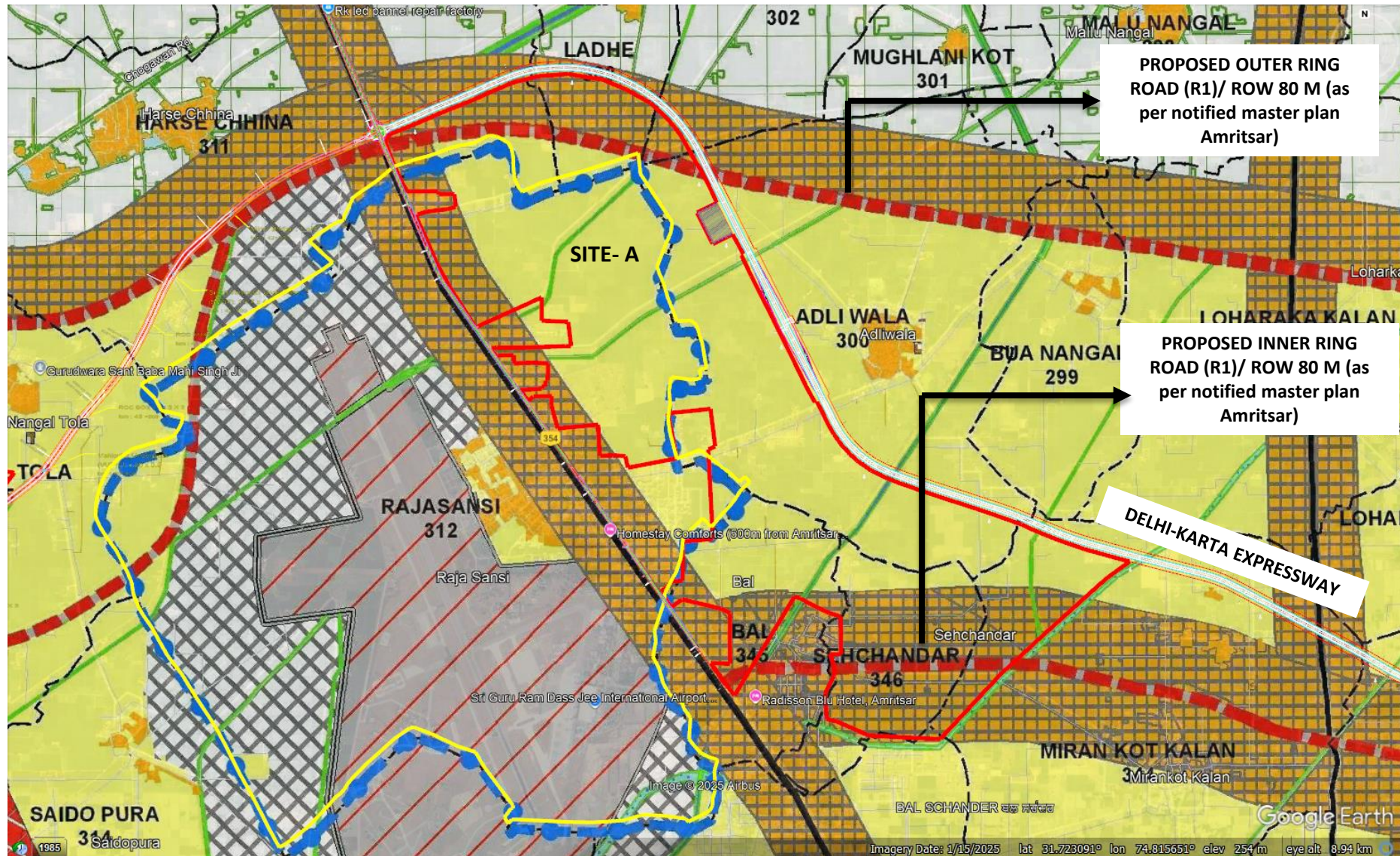
GOOGLE IMAGE SHOWING IDENTIFIED SITE FOR URBAN ESTATE AT AMRITSAR- AJNALA NH-354



Latitude , Longitude- 31°44'17.97"N, 74°47'58.00"E


District Town Planner, Amritsar

PART PLAN OF MASTERPLAN AMRITSAR (2010-31) SHOWING IDENTIFIED URBAN ESTATE AT AMRITSAR- AJNALA NH-354



District Town Planner, Amritsar